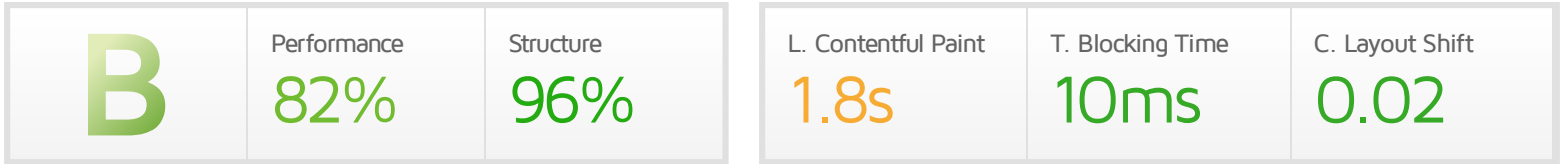




Performance Report for: <https://kentaltravel.com/>

Report generated: Mon, May 29, 2023 6:21 AM -0700
 Test Server Location: Vancouver, Canada
 Using: Chrome (Desktop) 103.0.5060.134, Lighthouse 9.6.4



Top Issues

IMPACT	AUDIT	
Med	Avoid an excessive DOM size <small>TBT</small>	1,612 elements
Low	Avoid chaining critical requests <small>FCP LCP</small>	13 chains found
Low	Serve static assets with an efficient cache policy	Potential savings of 30.1KB
Low	Avoid long main-thread tasks <small>TBT</small>	3 long tasks found
Low	Avoid enormous network payloads <small>LCP</small>	Total size was 1.83MB

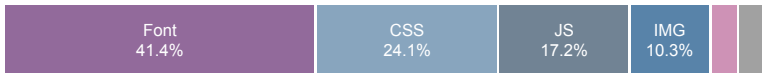
Page Details



Total Page Size - 1.83MB



Total Page Requests - 29



■ HTML
 ■ JS
 ■ CSS
 ■ IMG
 ■ Video
 ■ Font
 ■ Other

How does this affect me?

Today's web user expects a fast and seamless website experience. Delivering that fast experience can result in increased visits, conversions and overall happiness.

As if you didn't need more incentive, **Google has announced that they are using page speed in their ranking algorithm.**

About GTmetrix

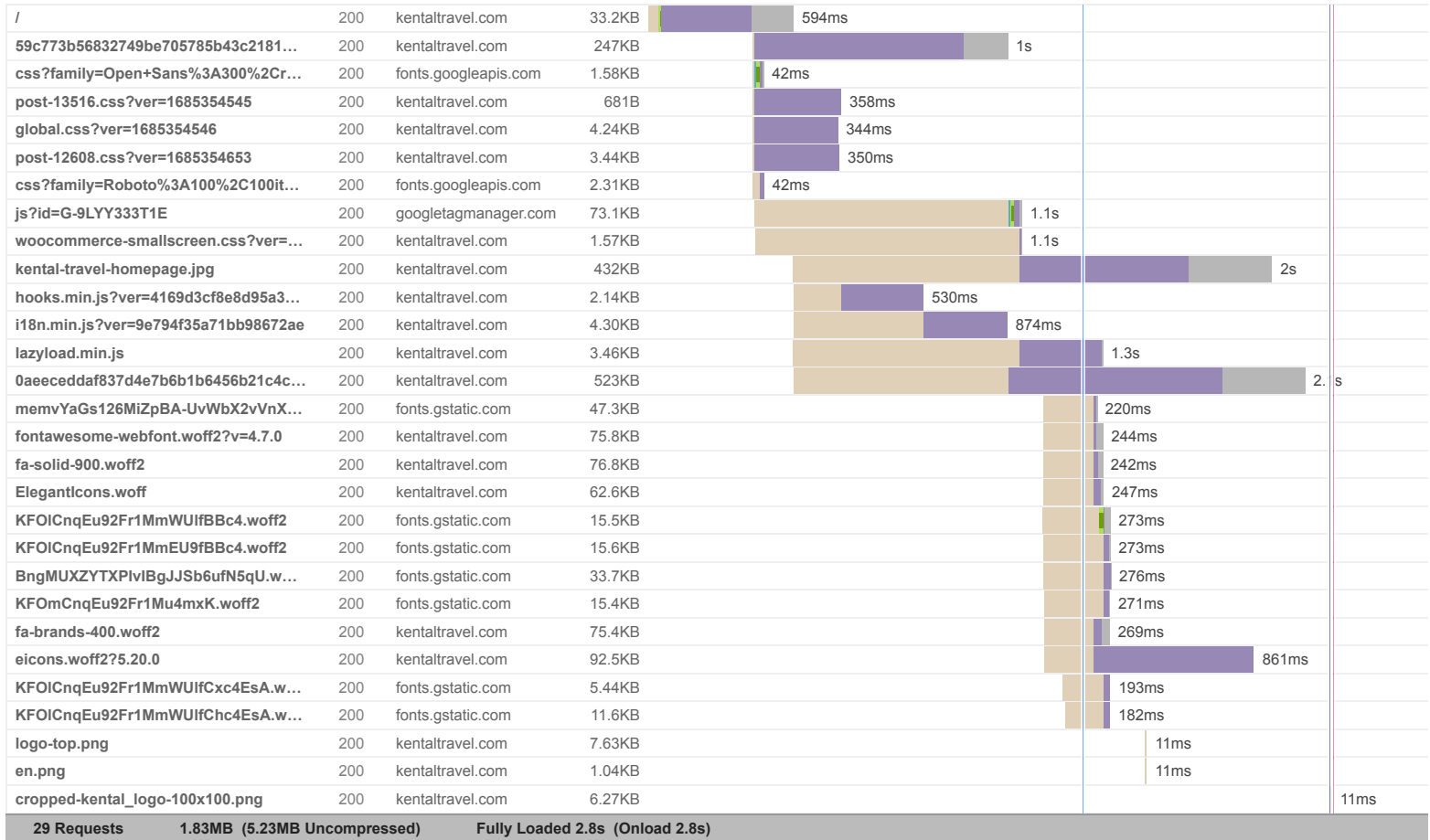


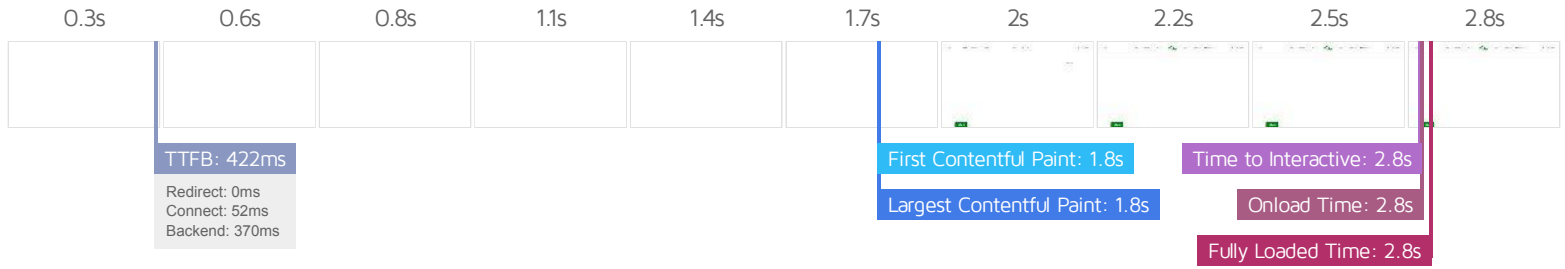
GTmetrix is developed by the good folks at Carbon60, a Canadian hosting company with over 27 years experience in web technology.

<https://carbon60.com/>

The waterfall chart displays the loading behaviour of your site in your selected browser. It can be used to discover simple issues such as 404's or more complex issues such as external resources blocking page rendering.

Iran visa and tour guide – Kental Travel





Performance Metrics

<p>First Contentful Paint</p> <p>How quickly content like text or images are painted onto your page. A good user experience is 0.9s or less.</p>	<p>Much longer than recommended</p> <p>1.8s</p>	<p>Time to Interactive</p> <p>How long it takes for your page to become fully interactive. A good user experience is 2.5s or less.</p>	<p>OK, but consider improvement</p> <p>2.8s</p>
<p>Speed Index</p> <p>How quickly the contents of your page are visibly populated. A good user experience is 1.3s or less.</p>	<p>Longer than recommended</p> <p>1.9s</p>	<p>Total Blocking Time</p> <p>How much time is blocked by scripts during your page loading process. A good user experience is 150ms or less.</p>	<p>Good - Nothing to do here</p> <p>10ms</p>
<p>Largest Contentful Paint</p> <p>How long it takes for the largest element of content (e.g. a hero image) to be painted on your page. A good user experience is 1.2s or less.</p>	<p>Longer than recommended</p> <p>1.8s</p>	<p>Cumulative Layout Shift</p> <p>How much your page's layout shifts as it loads. A good user experience is a score of 0.1 or less.</p>	<p>Good - Nothing to do here</p> <p>0.02</p>

Browser Timings

Redirect	0ms	Connect	52ms	Backend	370ms
TTFB	422ms	First Paint	1.8s	DOM Int.	2.8s
DOM Loaded	2.8s	Onload	2.8s	Fully Loaded	2.8s

IMPACT	AUDIT	
Med	Avoid an excessive DOM size <small>TBT</small>	1,612 elements
Low	Avoid chaining critical requests <small>FCP LCP</small>	13 chains found
Low	Serve static assets with an efficient cache policy	Potential savings of 30.1KB
Low	Avoid long main-thread tasks <small>TBT</small>	3 long tasks found
Low	Avoid enormous network payloads <small>LCP</small>	Total size was 1.83MB
Low	Eliminate render-blocking resources <small>FCP LCP</small>	Potential savings of 0 ms
Low	Ensure text remains visible during webfont load <small>FCP LCP</small>	7 fonts found
Low	Reduce JavaScript execution time <small>TBT</small>	133ms spent executing JavaScript
Low	Reduce unused CSS <small>FCP LCP</small>	Potential savings of 240KB
Low	Serve images in next-gen formats	Potential savings of 193KB
Low	Reduce initial server response time <small>FCP LCP</small>	Root document took 370ms
Low	Avoid serving legacy JavaScript to modern browsers <small>TBT</small>	Potential savings of 5.61KB
Low	Reduce unused JavaScript <small>LCP</small>	Potential savings of 556KB
N/A	Largest Contentful Paint element <small>LCP</small>	1 element found
N/A	Avoid large layout shifts <small>CLS</small>	5 elements found
N/A	Minimize main-thread work <small>TBT</small>	Main-thread busy for 847ms
N/A	Reduce the impact of third-party code <small>TBT</small>	Total size was 222KB
N/A	User Timing marks and measures	